



FINE ART SOCIETY  
NEW ZEALAND

# WAIKATO ART AUCTION 2011



NELSON COLLEGE  
FOOTBALL CLUB  
NEW ZEALAND  
SEPT. 5th 1909

Monday 26<sup>th</sup> September 2011 at 6.30pm

Lot 44 detail





FINE ART SOCIETY  
NEW ZEALAND

# WAIKATO ART AUCTION SEPTEMBER 2011

Monday 26<sup>th</sup> September 2011 at 6.30pm



Proudly supported by The Rotary Club of Waikato Sunrise  
*Waikato Art Auction 2011* will assist in raising funds for youth related programmes

a gallery member of



AESTHETE  
GALLERY



HAMILTON

WAIKATO'S LEADING FINE ART GALLERY

Historical & Contemporary Fine Art

Early New Zealand works; colonial landscapes; early Maori portraits and examples of the best art produced in the late 19th and the 20th centuries.

European works by 19th, 20th and 21st century artists.

Contemporary works by the country's leading artists, representing a wide range of subjects, styles and mediums.

Including a wide range of contemporary art prints.

Picture framing of the highest quality at reasonable prices as well as hand-made frames for special works.

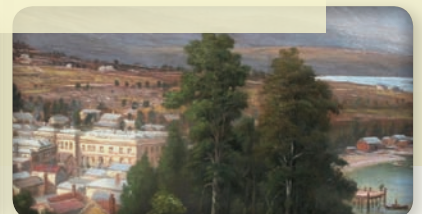
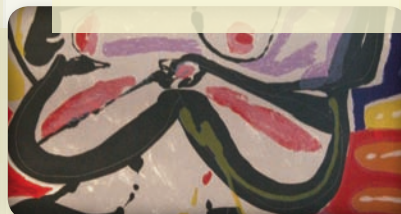
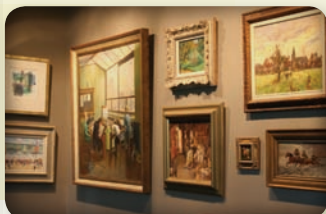
We can offer expert advice on condition and arrange restoration work.

Appraisals and valuations undertaken for all purposes.

*Aesthete Gallery - at the heart of fine art*

HAMILTON

Corner of Victoria and Rostrevor Streets





FINE ART SOCIETY  
NEW ZEALAND

# WAIKATO ART AUCTION SEPTEMBER 2011

Welcome to Waikato Art Auction 2011. We are pleased to be able to offer another great collection to our Waikato, national and international collectors. Following the success of our previous auctions we have been able to attract a number of very important and interesting entries for this year's catalogue.

Despite current uncertainties in global financial markets the art market continues to be in good heart, with strong demand for good works seeing records being regularly set both here and overseas.

Much of the art offered for sale in this catalogue has come from various estates and private collections, largely in the Waikato area. We believe the estimates to be very realistic and a number of lots are being sold without reserve. We are confident you will find something worthy of interest. We look forward to welcoming you to the viewing and seeing you at the auction.

Fine Art Society New Zealand provides a comprehensive fine art consultation service. Should you require advice on values, marketing, condition, restoration or custom frame making, we offer an obligation free service.

If you have any queries please don't hesitate to contact myself or the staff at Aesthete Gallery Hamilton.

Grant Bezett  
Director  
Fine Art Society New Zealand

grant@fineartsociety.net  
www.fineartsociety.net

## VIEWING HELD AT

**Aesthete Gallery Hamilton**  
cnr Victoria & Rostrevor Sts  
Hamilton

**Saturday 17th September to  
Sunday 25th September  
Daily: 10am – 4pm**

**Viewing on day of sale  
Monday 26th: 9am – 1pm**

Ph: 07 839 0730  
Fax: 07 839 0731  
www.aesthete.co.nz  
info@aesthete.co.nz



## AUCTION HELD AT

**Monday 26th September 2011  
commencing 6.30pm**

**RSA Rooms**

Rostrevor Street  
Hamilton

Ph: 0800 377 483

**Rex Sim**

Licensed Auctioneer







**1**  
**E.B. Lattey**  
NZ 1899-1986, *Ruapehu from Ohakune*  
Oil on canvas, Signed  
36 x 48cm, \$200 - 300



**2**  
**Julia Blackler**  
NZ 20thC, *Egan Park, Whitianga*  
Oil on canvas, Signed  
59 x 80cm, \$180 - 280



**3**  
**Ivy Perry**  
NZ 20thC  
*Pakuranga  
Fields towards  
Mt Wellington*  
Watercolour  
Signed  
34 x 48cm  
\$150 - 250



**4**  
**Ian Evans**  
NZ 20thC  
*Mountain &  
Lake Scene*  
Oil on board  
Signed  
24 x 28cm  
\$100 - 200

**5**  
**Margot Mountain**  
NZ 20thC  
*Cape Reinga*  
Watercolour  
Signed  
45 x 62cm  
\$300 - 500



**6**  
**Wayne Sinclair**  
NZ 20thC  
*Old Saw Mill Town*  
Oil on board  
Signed  
59 x 90cm  
\$500 - 800



**7**  
**Aston Greathead**  
NZ 20thC, *Mount Cook from Braemar Station*  
Watercolour, Signed  
24 x 33cm, \$200 - 300



**8**  
**Peter Williams**  
NZ 20thC, *Lake Manapouri, 1964*  
Oil on board, Signed  
58 x 73cm, \$150 - 250







9

**Bessie Kendon (née Blomfield)**NZ b1880, *Howick Estuary*

Oil on canvas, Signed, 29 x 41cm, \$120 - 180



10

**Peter Wallers**NZ b1953, *Whakapapa River, Near Katahi 1981*, Pastel, Signed, 21 x 26cm, \$100 - 200

11

**Carl T. Laugesen**NZ 1900-87, *Wellington Harbour*

Oil on canvas, Signed, 42 x 55cm, \$250 - 350



12

**Herbert E. Rogers**NZ 20thC  
*Gums Trees in Summer*  
Watercolour  
Signed  
26 x 32cm  
\$150 - 250

13

**Clark Esplin**NZ b1941  
*Timber Factory, South Westland*  
Watercolour  
Signed  
40 x 53cm  
\$300 - 500

14

**Will Anderson**British 19thC  
*Meeting of the Unemployed*  
Oil on board  
Signed  
25 x 44cm  
\$400 - 600

15

**Gaston de Val**1924-2010  
*Te Araroa, East Cape*  
Oil on canvas  
Signed  
30 x 39cm  
\$350 - 500

16

**Roy Sefton**NZ 20thC  
*Towards Ruapehu from National Park*  
Oil on canvas  
Signed  
44 x 69cm  
\$500 - 800

17

**Wallace T. Keown**NZ 20thC  
*Blackmount Woolshed '81*  
Oil on board  
Signed  
21 x 28cm  
\$150 - 200





**18**  
**William Allen Bollard**  
 NZ 1869-1941  
*Entrance to the Pass*  
 Oil on canvas  
 Signed  
 32 x 51cm  
 \$250 - 400



**19**  
**Val Tubman**  
 NZ 20thC  
*Towards Waihi*  
 Oil on board  
 Signed  
 54 x 80cm  
 \$200 - 300



**20**  
**Leslie Mills**  
 British 19thC  
*Magdalen Great Tower, Oxford*  
 Watercolour  
 Signed  
 26 x 43cm  
 \$250 - 400



**21**  
**Joan Lindsay**  
 NZ 20thC  
*Treescape*  
 Acrylic on board  
 Signed, 20 x 76cm  
 \$200 - 300



**22**  
**A. Sinclair**  
 British 19thC  
*Village Scene*  
 Watercolour  
 Signed  
 24 x 13cm  
 \$160 - 200



**23**  
**Rosy**  
 Italian 20thC  
*Venetian Canal*  
 Watercolour  
 Signed  
 32 x 16cm  
 \$150 - 250



**24**  
**Ida Carey**  
 NZ 1891-1982, *Old Cambridge Maori*  
 Oil on pinex, Unsigned cert verso  
 59 x 59cm, \$700 - 900



**25**  
**Ida Carey**  
 NZ 1891-1982, *Maori Man in Grey Jacket*  
 Oil on pinex, Unsigned cert verso  
 60 x 50cm, \$600 - 800



**26**  
**Artist Unknown**  
 NZ 19thC  
*Faithful Old Hound*  
 Oil on board  
 Signed  
 100 x 36cm  
 \$300 - 400





**27**  
**J.A. Bond**  
 NZ 19thC  
*Pair, Pink & White Terraces*  
 Pastel  
 Signed  
 24 x 74cm  
 \$1000 - 2000

**31**  
**Marie Cross**  
 NZ 1870-1943  
*Mrs Aratina of Tuhoe Tribe, Opotiki*  
 Pastel  
 Signed  
 29 x 24cm  
 \$80 - 120



**28**  
**J.A. Bond**  
 NZ 19thC, *Ohinemutu Church*  
 Pastel, Unsigned, 24 x 64cm, \$400 - 600



**32**  
**Kathleen Salmond**  
 NZ 20thC  
*In the Shade of the Trees*  
 Watercolour  
 Signed  
 11 x 15cm, \$40 - 60



**33**  
**Ida Carey**  
 NZ 1891-1982  
*Taylor's Whare*  
 Oil on canvas  
 Signed  
 28 x 32cm  
 \$2000 - 3000



**29**  
**Arthur Iles**  
 NZ 19thC  
*Guide Sophia C1908*  
 Chromolithographic image on concave metal plate  
 25cm diameter  
 \$1000 - 1250

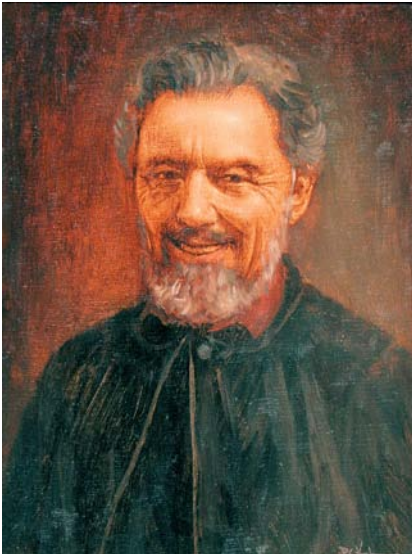
**34**  
**19thC Unknown**  
*Pair, Pink & White Terraces*  
 Oil on board  
 Unsigned  
 24 x 30cm  
 \$1200 - 1800



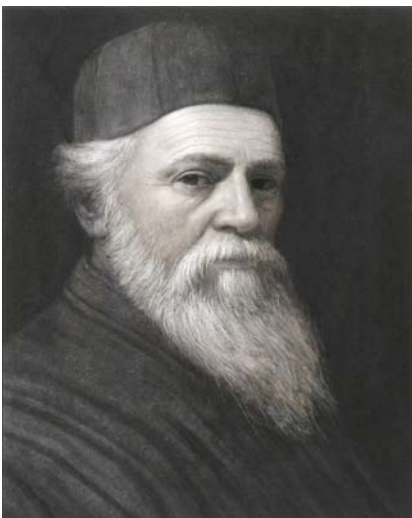
**30**  
**C1920 Artist Unknown**  
*Guide Sophia's Whare*  
 Carved wooden model  
 32 x 50 x 53 (HxWxD)cm  
 \$1400 - 1800







**35**  
**Philip Holmes**  
NZ 20thC  
*Portrait*  
*Maori Man*  
Oil on canvas  
Signed  
21 x 15cm  
\$600 - 900



**36**  
**Philip Holmes**  
NZ 20thC  
*The Arch*  
*Bishop*  
Acrylic on canvas  
Signed  
44 x 33cm  
\$800 - 1200



**37**  
**Russell Clark**  
NZ 1905-66  
*Farmyard*  
*(Pig Farm*  
*Near Timaru)*  
Pencil on paper  
Inscribed  
16 x 25cm  
\$900 - 1200

**38**  
**Russell Clark**

NZ 1905-66, *Stoneholm Farm near Sheffield*,  
Watercolour, Inscribed, 16 x 23cm, \$1800 - 2500



**39**  
**Tim Wilson**  
NZ 20thC  
*Lake Grave,*  
*Sutherland*  
*Sound, 1983*  
Oil on board  
Signed  
40 x 50cm  
\$1500 - 2500



**40**  
**Tim Wilson**  
NZ 20thC  
*George Sound,*  
*Fiordland, 1983*  
Oil on board  
Signed  
24 x 44cm  
\$800 - 1200



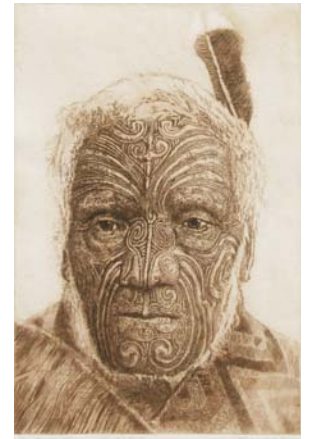
**41**  
**Tim Wilson**  
NZ 20thC  
*Kapiti Island*  
Oil on canvas  
Signed  
48 x 74cm  
\$2000 - 3000



**42**  
**Robert Way**  
NZ 20thC, *Anehana (Maori Chief)*  
Etching 30/150, Signed  
34 x 23cm, \$200 - 300



**43**  
**Robert Way**  
NZ 20thC, *Tamati Waka Hene*  
Etching 20/150 Signed  
32 x 22cm, \$200 - 300





44

**Sean Garwood**

NZ 20thC

*The Old Blues that Led to the All Blacks*

Oil on board, Signed, 46 x 55cm

\$7,000 - 10,000

This painting immortalises the heritage of New Zealand rugby from its origins at Nelson College.

The C1909 jersey itself is archived at Nelson College. The striking colour of the jersey is a combination of Oxford and Cambridge blues. The boots are similar in design to those worn by Don Clarke in his 1956 debut. The old leather rugby ball is from the early 1900's. The Nelson College cap depicts the years that this particular student made the 1st XV. There is an invitation from the Nelson College Football Club for a dance to be held at the college on 5th September 1909. Inscribed in the desk is the name of the talented three quarter George Harper. He was the first Nelson College player to become an All Black in 1893.



45

**Mark Cross**

NZ 20thC

*Pumpkins*

Watercolour, Signed

19 x 34cm, \$250 - 400



46

**Annie Baird**

NZ 1932-99

*Girl in the Blue**Beret*

Watercolour

Signed

73 x 53cm

\$1200 - 1600

47

**Tim Quirke**

SA 20thC

*Nude in**a Chair*

Pastel

Monogrammed

68 x 47cm

\$800 - 1100



48

**Tim Quirke**

SA 20thC

*The Blue**Kimono*

Pastel

Monogrammed

50 x 32cm

\$900 - 1200







**53**  
**W.G Baker**  
 NZ 1865-1929  
*Pa Scene, Waikato*  
 Oil on canvas  
 Signed & titled  
 45 x 67cm  
 \$4500 - 6000



**49**  
**Vera Cummings**  
 NZ 1891-1949  
*Turi Whatarangi*  
 Oil on canvas  
 Signed  
 25 x 20cm  
 \$6000 - 8000



**50**  
**L.W. Wilson**  
 1850-1912  
*Head of Dusky Sound*  
 Watercolour  
 Signed & inscribed  
 13 x 20cm  
 \$900 - 1200

**54**  
**L.W. Wilson**  
 1850-1912, *Takatimu Mountains, Southland*  
 Watercolour, Signed & inscribed, 27 x 47cm, \$5000 - 8000



**51**  
**J.C. Hoyte**  
 1835-1913  
*Milford Sound*  
 Watercolour  
 Signed  
 24 x 43cm  
 \$4000 - 6000



**55**  
**John Gibb**  
 1831-1909  
*Percy Island (The Hole in the Rock)*  
 Oil on canvas  
 Signed  
 74 x 51cm  
 \$14,000 - 18,000

**52**  
**W.G Baker**  
 NZ 1865-1929  
*Maori Pa, Waikato River*  
 Oil on canvas  
 Signed & titled  
 76 x 111cm  
 \$9,000 - 12,000



56

**Alfred Sharpe**

1836-1908

*Nipped between  
Icebergs, 1888*

Watercolour

59 x 97cm

\$80,000 - 100,000



Nipped by Icebergs - The Astrolabe caught in pack-ice in Antarctica, February 1838 while on a French naval voyage of world circumnavigation commanded by Dumont d'Urville. The painting shows the Astrolabe, caught bow first, in pack-ice not far

from the South Orkneys. The sister ship Zelee has come to assist, and lies anchored in the open sea behind. Two groups of sailors are setting kedging anchors to stabilise the ship. The ship remained trapped until 9th February 1838

57

**L.W. Wilson**1850-1912, *Safe Cove, Lake Te Anau, 1890*

Oil on board, Signed &amp; inscribed, 32 x 55cm, \$12,000 - 16,000



58

**Frank Wright**1860-1923, *Maori Life Waikato River*

Watercolour, Signed, 51 x 76cm, \$15,000 - 18,000



59

**W.G Baker**

NZ 1865-1929

*Buller Gorge*

Oil on canvas

Signed &amp; titled

47 x 70cm

\$2500 - 3500



60

**W.G Baker**

NZ 1865-1929

*Harrison's Cove,**Milford Sound*

Oil on canvas

Signed &amp; titled

44 x 66cm

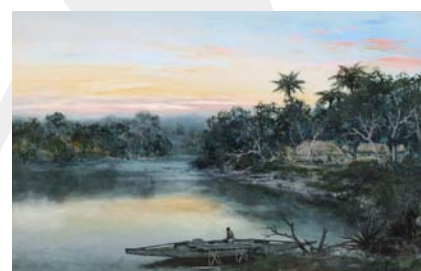
\$1800 - 2500



61

**M.J Wadham**1864-1950, *Fisherman on the Lagoon*

Pastel, Signed, 46 x 71cm, \$700 - 1000







**62**  
**Paul Hartigan**  
 NZ b1953  
*Self Portrait as the Tortured Artist Contemplating His Future*  
 Oil on board  
 Signed & titled  
 38 x 31cm  
 \$4000 - 6000



**63**  
**Eion Stevens**  
 NZ b1952  
*Ceremonial*  
 Oil on board  
 Signed  
 60 x 60cm  
 \$800 - 1200



**64**  
**Rozi Demant**  
 NZ b1984  
*Butterflies*  
 Acrylic on board  
 Signed  
 130 x 70cm  
 \$7500 - 9500

**67**  
**Dick Frizzell**  
 NZ b1943  
*Man and Woman Making Love*  
 Oil on board  
 Signed & titled  
 55 x 55cm  
 \$8000 - 10000

**65**  
**Nigel Brown**  
 NZ b1949  
*Tivaevae Dog*  
 Oil on canvas  
 Signed  
 91 x 60cm  
 \$6000 - 8000



**66**  
**Michael Smither**  
 NZ b1939  
*Pukekura Park*  
 Oil on board  
 Signed  
 36 x 40cm  
 \$3000 - 4000





68

**Pat Hanly**

NZ 1932-2004

*Pure Painting, E. (ecstasy)*

From the Pure Painting and Condition Series

Oil and enamel on board

Signed, titled & dated 1977

92 x 92cm

\$50,000 - 70,000

Provenance:

From the collection of Dr Kate Dewes

Ph.D. O.N.Z.M. Christchurch

This is the first time this work has been offered for sale since being purchased from the artist, who was a personal friend of Kate Dewes.



69

**Don Binney**

NZ b1940

*Manunui, Otakamiro 2010*

Screenprint

Signed & inscribed

51 x 37cm

\$2500 - 4000

70

**Don Binney**

NZ b1940

*Tiritiri Matangi from Whangaparaoa*

Charcoal on paper

Signed

30 x 46cm

\$6000 - 8000



71

**Keith Paterson**

NZ 1925-93

*Vent de la Tardor (Autumn Wind)*

Mixed media on paper

Signed & inscribed

60 x 51cm

\$1250 - 1600



72

**Robin White**

NZ b1946

*Oyster Catchers*

Screenprint 25/50

Signed & inscribed

48 x 33cm

\$4000 - 6000







**73**  
**Keith Patterson**  
 NZ 1925-93  
*Coastal Landscape*  
 Mixed Media  
 Signed  
 64 x 49cm  
 \$1350 - 1850



**74**  
**Ted Dutch**  
 b1928  
*Two Figures, 1970*  
 Screenprint 21/25  
 Signed & inscribed  
 51 x 65cm  
 \$800 - 1200



**75**  
**Ralph Hotere**  
 NZ b1931  
*Pine Pine Pine*  
 Screenprint  
 Signed & inscribed  
 56 x 42cm  
 \$4000 - 6000



**76**  
**Paul Hartigan**  
 NZ b1953  
*Tui Song*  
 Ultrachrome print  
 3/10  
 Signed & inscribed  
 51 x 49cm  
 \$900 - 1200

**77**  
**Allen Maddox**  
 NZ 1948-2000  
*Untitled*  
 Watercolour  
 Signed  
 42 x 29cm  
 \$2500 - 3500



**78**  
**Mervyn Williams**  
 NZ b1940  
*Untitled*  
 Watercolour  
 Signed  
 71 x 50cm  
 \$800 - 1200



**79**  
**Paul Dibble**  
 NZ b1943  
*Geometric Figure*  
 Bronze 2/3  
 Signed  
 62 x 15 x 15cm  
 \$9,000 - 12,000





**80**  
**Minnie F. White**  
 NZ 1891-1983  
*Whitford,*  
*New Zealand*  
 Watercolour  
 Signed  
 26 x 31cm  
 \$300 - 400



**81**  
**Minnie F. White**  
 NZ 1891-1983  
*The Resting*  
*Place*  
 Watercolour  
 Signed  
 27 x 38cm  
 \$250 - 400



**82**  
**Minnie F. White**  
 NZ 1891-1983  
*Brighton*  
 Watercolour  
 Signed  
 28 x 37cm  
 \$200 - 300



**83**  
**Minnie F. White**  
 NZ 1891-1983  
*Life in a*  
*French Lane*  
 Watercolour  
 Unsigned cert  
 verso  
 26 x 36cm  
 \$200 - 300



**84**  
**Minnie F. White**  
 NZ 1891-1983  
*Gloucester*  
 Watercolour  
 Unsigned cert  
 verso  
 24 x 29cm  
 \$200 - 300

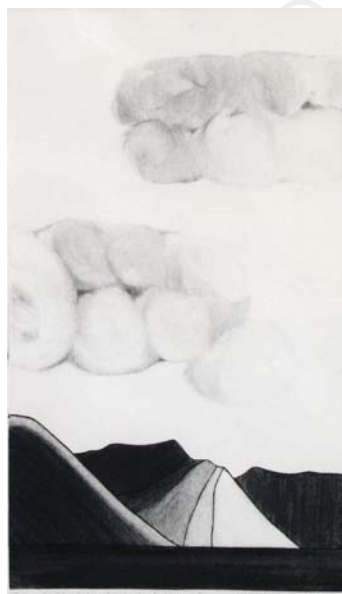
**86**  
**Alastair**  
**Michie**  
 French  
 1921-2008  
*Resurrection*  
 Mixed media  
 Signed  
 89 x 69cm  
 \$800 - 1200



**87**  
**Arthur Dagley**  
 NZ 1919-98  
*Wharfside #3*  
 Acrylic on board  
 Signed  
 41 x 42cm  
 \$1000 - 1500



**85**  
**Marilyn Webb**  
 NZ b1937, *Cloud Landscape*  
*Wakatipu*, Aquatint, Signed &  
 inscribed, 60 x 34cm, \$150 - 200



**88**  
**Arthur Dagley**  
 NZ 1919-98, *Port Theme*  
 Wood & Resin, Signed  
 61 x 30cm, \$1200 - 1800



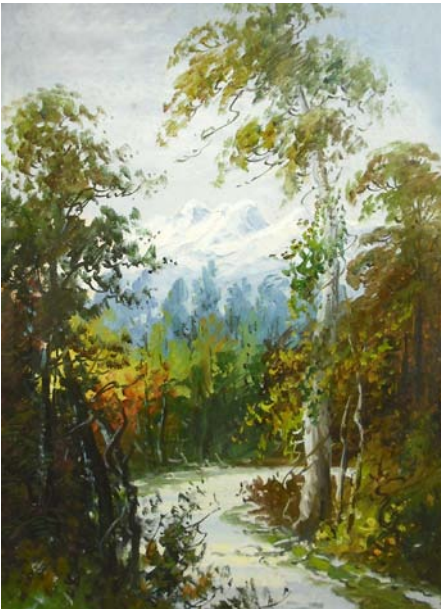




**89**  
**Cynthia Taylor**  
 NZ 20thC  
*Spring Grasses*  
 Acrylic on board  
 Signed  
 19 x 30cm  
 \$90 - 140



**90**  
**Kathleen Arini Vane**  
 NZ 1891-1965  
*Landscape from a Terrace*  
 Watercolour  
 Signed  
 23 x 33cm  
 \$400 - 600



**91**  
**W.A. Bollard**  
 NZ 1869-1941  
*A Road into the Mountains*  
 Oil on board  
 Signed  
 50 x 37cm  
 \$200 - 300



**92**  
**Josephine Davis**  
 NZ b1959  
*Viennese Waltz*  
 Oil on canvas  
 Signed  
 40 x 30cm  
 \$400 - 600

**93**  
**Louise Henderson**  
 1902-1994  
*Seated Nude*  
 Pencil on paper  
 Estate cert verso  
 54 x 41cm  
 \$300 - 500



**94**  
**C.H. Howarth**  
 1856-1945  
*The Old Church, Italy*  
 Watercolour  
 Signed  
 35 x 28cm  
 \$700 - 900



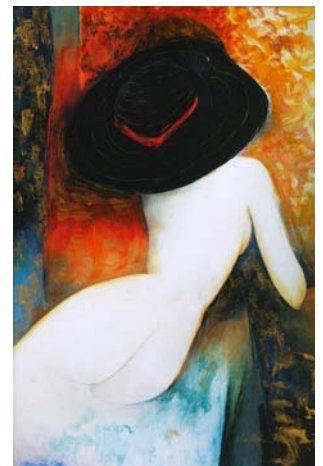
**95**  
**Frederick Roe RI RBA**  
 1864-1947  
*The Burlington Arms, Chiswick*  
 Watercolour  
 Signed  
 24 x 33cm  
 \$1200 - 1600



**96**  
**Irene Denford**  
 NZ 20thC  
*Mount Ruapehu from Ohakune*  
 Watercolour  
 Signed  
 36 x 58cm  
 \$300 - 400



**97**  
**Danielle Alarcon Dalvin**  
 French 20thC, *Nude in a Hat*  
 Hand-finished litho, Signed  
 28 x 18cm, \$200 - 300







98

**J.D. Perrett?**1859-1937, *South Island Landscape*

Oil on canvas, Bears signature

35 x 60cm, \$250 - 400



99

**Unknown**

British 19thC

*A Break in the Weather*

Watercolour

Unsigned

40 x 57cm

\$250 - 400



100

**George Lyles**

British 20thC

*Thames Barges*

Watercolour

Signed

18 x 26cm

\$180 - 280



101

**Mark Edwin Dockree**

1856 -1901

*Landscape with Cows*

Oil on canvas

Signed &amp; dated 1878

16 x 35cm

\$900 - 1200



102

**Josephine Davis**

NZ b1959

*Seated Nude*

Oil on canvas

Signed

40 x 30cm

\$600 - 900

103

**Artist Unknown**

NZ 19thC

*View of Wellington Harbour*

Watercolour, Initialled JS

17 x 24cm, \$200 - 400



104

**Kuitenbrouwer**

French 19thC

*Horses and Carriage*

Oil on Panel

Signed

59 x 73cm

\$1200 - 1500

105

**H. Hardy**

British 19thC

*The Gamekeeper's Rest*

Oil on board

Signed

16 x 35cm

\$700 - 900



106

**J. Thorn**

British 19thC

*Near Winchester*

Oil on canvas

Signed

40 x 30cm

\$700 - 900



107

**C.F. Goldie**1870-1947, *A Good Joke*

Chromolithograph, In period oak frame, 38 x 30cm, \$900 - 1200





# *The Old Blues that led to the All Blacks*

A unique collector's edition

by **Sean Garwood**

Ultrachrome archival print on 310gsm Innova soft matt fine art paper. 405 x 550mm. Limited edition of 250  
Each print individually signed and numbered by the artist

Published by



FINE ART SOCIETY  
NEW ZEALAND



[www.fineartsociety.net](http://www.fineartsociety.net) or call 0800 377 483 for details

## WAIKATO INSURANCE BROKERS LIMITED

*Are proud to be the insurance providers for*  
AESTHETE GALLERY HAMILTON and FINE ART SOCIETY NEW ZEALAND

PO BOX 1118 • 27 HARWOOD ST • HAMILTON 3240 • PH: 07 839 3627 • EMAIL: [john@wibl.co.nz](mailto:john@wibl.co.nz)

**For professional obligation-free advice on all your insurance requirements**



## WORLDWISE TRAVELLERS HEALTH and VACCINATION CENTRE

Gate 1, Anglesea Clinic  
cnr Anglesea and Thackeray Streets, Hamilton

Phone 07 839 7761

Email: [hamilton@worldwise.co.nz](mailto:hamilton@worldwise.co.nz)

Web: [www.worldwise.co.nz](http://www.worldwise.co.nz)

***Proud Supporters of Aesthete Gallery***





FINE ART SOCIETY  
NEW ZEALAND

# ABSENTEE BIDDING FORM

HAND IN AT AESTHETE GALLERY, HAMILTON, OR FAX TO: 07 839 0731

Name:.....

Address:.....

Phone:..... Mobile:.....

Fax:..... Email:.....



Bidding Number  
(Will be issued for our reference)

Please bid on my behalf at the *Waikato Art Auction 2011 September* sale for the lots listed below.

These bids are to be executed as cheaply as permitted by other bids or reserves.

I agree to comply with the Conditions of Sale as printed in this catalogue.

Signed:.....

Lot No.	Artist/Description	\$ Bid Price (excluding Premium)
.....	.....	.....
.....	.....	.....
.....	.....	.....
.....	.....	.....
.....	.....	.....
.....	.....	.....
.....	.....	.....
.....	.....	.....
.....	.....	.....
.....	.....	.....
.....	.....	.....

## VIEWING HELD AT

### Aesthete Gallery Hamilton

cnr Victoria &  
Rostrevor Sts  
Hamilton  
Ph: 07 839 0730  
Fax: 07 839 0731  
www.aesthete.co.nz  
info@aesthete.co.nz



FINE ART SOCIETY  
NEW ZEALAND

## STAGED BY

FINE ART SOCIETY  
NEW ZEALAND

Ph 0800 377 483  
PO Box 9285  
Newmarket  
Auckland 1149  
www.fineartsociety.net



## AUCTION HELD AT

### RSA Rooms

Rostrevor Street  
Hamilton  
Ph: 0800 377 483

**Rex Sim**  
Licensed  
Auctioneer







FINE ART SOCIETY  
NEW ZEALAND

# CONDITIONS OF SALE

The highest bidder shall be the buyer. In the event of any dispute as to the bidding in respect of any lot, that lot be offered again at the discretion of the auctioneer whose decision shall be absolute and final.

The auctioneer has the right:

1. To refuse any bid
2. To advance the bidding at his absolute discretion
3. To place a reserve on any lot
4. To place a bid or bids on behalf of the seller
5. To withdraw any lot from sale
6. To require a successful bidder to pay forthwith the whole or any parts of the purchase price

The auctioneer acts as the agent of the seller and the auctioneer nor the seller shall be responsible for any defects or faults in any lot or for any errors in the description of any lot and no compensation shall be paid in respect of same.

From the time of the lot being sold, such lot will be the responsibility of the buyer.

## BUYERS' GUIDE

### BIDDER REGISTRATION

All intending bidders are required to register for a bidding number prior to the auction commencing.

### ABSENTEE BIDS

Absentee bidding can be arranged – please ask a member of staff for an *Absentee Bidding Form* or see overleaf. The Auctioneers will do its utmost to execute absentee bids for customers, however it will not be responsible if circumstances arise which result in failure to do so.

### COLLECTION OR DELIVERY OF PURCHASES

Successful bidders may collect their purchases after making payment at the conclusion of the auction. Purchasers are required to settle their accounts and collect their purchases within 24 hours after the sale. Packing and freight can be arranged at the buyer's expense.

### BUYERS' PREMIUM

A buyers' premium of 12.5% (plus GST) applies to all lots.

### ESTIMATES

Estimates are provided as a guide only. They are prepared well in advance of the sale and are subject to revision at any time.

### PAYMENT FACILITIES

EFTPOS is available for transactions up to \$2,000 which is the bank's daily limit. For transactions over that amount it is possible to pay by cheque where credit card details are provided as security and at the sole discretion of management. Visa and Mastercard are accepted on the understanding that a 2% surcharge applies.

## VIEWING HELD AT

### Aesthete Gallery Hamilton

cnr Victoria &  
Rostrevor Sts  
Hamilton  
Ph: 07 839 0730  
Fax: 07 839 0731  
www.aesthete.co.nz  
info@aesthete.co.nz



FINE ART SOCIETY  
NEW ZEALAND

## STAGED BY

FINE ART SOCIETY  
NEW ZEALAND

Ph 0800 377 483  
PO Box 9285  
Newmarket  
Auckland 1149  
www.fineartsociety.net

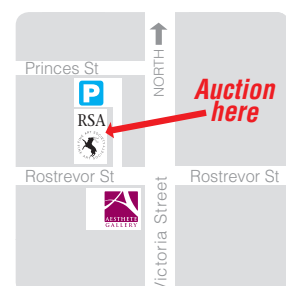


## AUCTION HELD AT

### RSA Rooms

Rostrevor Street  
Hamilton  
Ph: 0800 377 483

Rex Sim  
Licensed  
Auctioneer





# WAIKATO ART AUCTION

## SEPTEMBER 2011



Lot 68



Proudly supported by The Rotary Club of Waikato Sunrise  
 Waikato Art Auction 2011 will assist in raising funds for youth related programmes

Viewing held at:

**AESTHETE GALLERY**  
 a gallery member of  
  
 FINE ART SOCIETY  
 NEW ZEALAND

Aesthete Gallery  
 Hamilton  
 cnr Victoria &  
 Rostrevor Sts  
 Hamilton  
 Ph: 07 839 0730  
 Fax: 07 839 0731  
 www.aesthete.co.nz  
 info@aesthete.co.nz

Staged by:

**FINE ART SOCIETY  
 NEW ZEALAND**  
 Ph 0800 377 483  
 PO Box 9285  
 Newmarket  
 Auckland 1149  
 www.fineartsociety.net

Auction held at:

RSA Rooms  
 Rostrevor Street  
 Hamilton  
 Ph: 0800 377 483

Rex Sim  
 Licensed  
 Auctioneer

