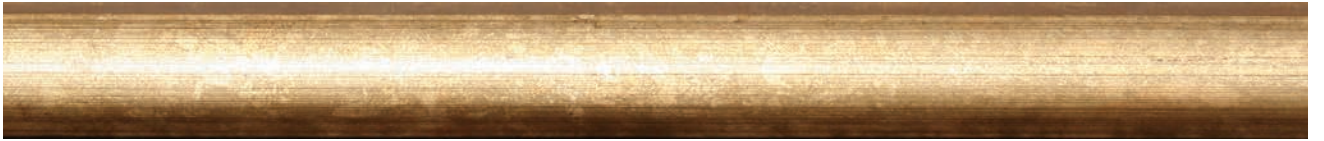




FINE ART SOCIETY
NEW ZEALAND LIMITED

WAIKATO ART AUCTION 2008

Monday 23rd June 2008 at 6.30pm



FINE ART SOCIETY
NEW ZEALAND LIMITED

WAIKATO ART AUCTION 2008

TO BE HELD

Monday 23rd June 2008 at 6.30pm
1st Floor, Aesthete Gallery
Corner Victoria and London Streets, Hamilton
Tel: 07 839 0730 Fax: 07 839 0731
www.aesthete.co.nz

VIEWING SCHEDULE

Auckland Viewing of Auction Highlights

Warwick Henderson Gallery
32 Bath Street, Parnell, Auckland
09 309 7513
Tuesday 10th June to Saturday 14th June
Daily: 10am – 4pm

Hamilton Viewing of Entire Catalogue

Aesthete Gallery
Cnr Victoria and London Streets, Hamilton
07 839 0730
Tuesday 17th June to Monday 23rd June
Tuesday to Sunday: 10am – 4pm
Monday 23rd: 10am – 2pm



Proudly supported by The Rotary Club of Waikato Sunrise
Waikato Art Auction 2008 will assist in raising funds for the Hydro-Therapy Trust.





1
A Batty
 English 20thC
English River
 Oil on card
 Signed
 25 x 36cm
 \$200 - 400



2
Tony Lewis
 b.1924
Winter Scene, 1987
 Watercolour
 Signed
 23 x 34cm
 \$200 - 400



3
Eliza Anscombe
 1872-1934
A Bushland Waterfall, c.1895
 Oil on board
 Inscribed verso
 23 x 31cm
 \$400 - 600



4
Aston Greathead
 b.1921
Winter Willows, Lake Wakatipu, Queenstown, 1965
 Oil on board
 Signed
 39 x 54cm
 \$600 - 900



5
Randall Froude
 NZ 20thC
Boating on Taupo
 Oil on canvas
 Signed
 23 x 48cm
 \$400 - 600



6
Isa Outhwaite
 1842-1925
View of Auckland Harbour, 5th March 1910
 Watercolour
 Signed & dated verso
 9 x 16cm
 \$500 - 800



7
Russell Clark
 1905-1966
Waikato Pastures
 Gouache
 Signed
 27 x 31cm
 \$1800 - 2200



11
Ida Carey
 1891-1982
Magnolias in a Vase
 Oil on canvas
 Unsigned
 56 x 64cm
 \$1200 - 1800



8
Russell Clark
 1905-1966
Sir Walter's Gesture
 Ink on paper
 Initialed
 12 x 16cm
 \$1200 - 1600



9
Kay Walsh
 NZ 20thC
Shearer's Hut
 Watercolour
 Signed
 37 x 56cm
 \$300 - 500



10
Kay Walsh
 NZ 20thC
Winter Bouquet
 Pastel
 Signed
 47 x 52cm
 \$400 - 600



12
Ida Carey
 1891-1982
Roses in Glass Jar
 Oil on canvas
 Signed
 39 x 29cm
 \$800 - 1200



13
Rona Flemming
 1901-1976
Wildlife Ponds
 Acrylic on canvas
 Signed
 43 x 61cm



14
E.B. Lattey
 1899-?
Hazy Morning - Urewera
 Oil on canvas
 Signed
 54 x 69cm
 \$800 - 1200



15
Allan Crombie
 NZ 20thC
Grey Day, Westland
 Oil on board
 Signed
 37 x 59cm
 \$400 - 700



16
Leonard Mitchell
 1925-1980
The Drover - Mohuiti Valley, 1959
 Oil on board
 Signed and dated
 16 x 21 cm
 \$1800 - 2000



18
Gwyneth Richardson
 NZ 20thC
Old Fashioned Roses
 Watercolour
 Signed
 66 x 72cm
 \$400 - 600



17
T.R. Attwood
 1865-1926
River Scene
 Oil on board
 Signed
 52 x 24cm
 \$600 - 900



19
Simon Payton

b. 1950
Figure Study
Mixed media on paper
46 x 61cm
\$500 - 800



20
Darcy Nicholas

b. 1945
Mask over the Land
Mixed media on paper
Signed
92 x 74cm
\$5000 - 8000



21
Robyn Kahukiwa

b. 1940
Emblems of Identity, 1997
Lithograph 4/15
Signed
69 x 48cm
\$1450 - 1650



22
Robyn Kahukiwa

b. 1940
Gathering Pipi, 1973
Silkscreen Ed 3/7
Signed
33 x 28cm
\$950 - 1250



23
Robyn Kahukiwa

b. 1940
Here in Me, 2006
Silkscreen Print Ed 12
Signed
52 x 42cm
\$1200 - 1400



24
Kase Jackson

b. 1926
Cnr Crummer Rd and Elgin Street Grey Lynn, 1988
Oil & Pastel on paper
Signed & dated
60 x 86cm
\$1600 - 1900



25
Fatu Feu'u
 b.1946
Taputapa, 1990
 Lithograph 16/24
 Signed
 66 x 48cm
 \$1450 - 1650



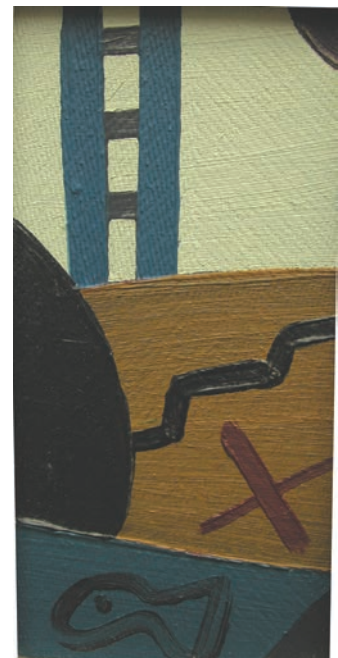
29
Helen Becconsall
 b.1954
West 16, 2007
 Mixed Media
 Signed
 40 x 40cm
 \$1000 - 1200



26
Marilynn Webb
 b.1937
Places & Names suite, 2002
 Hand finished print
 Signed
 75 x 55cm
 \$1000 -1400



27
Philip Kilmore
 NZ 20thC
Chains, 2006
 Oil on board
 Signed
 22 x 27cm
 \$1750 - 1950



30
Eion Stevens
 b.1952
Backwater, 2005
 Oil on prepared board
 Signed
 48 x 66cm
 \$800 - 1000



28
Eion Stevens
 b.1952
Lifesaver, 1998
 Acrylic on paper
 Signed
 43 x 33cm
 \$1200 - 1400



31

Nigel Brown, b.1949*At Peace with Yah Self*, 2005

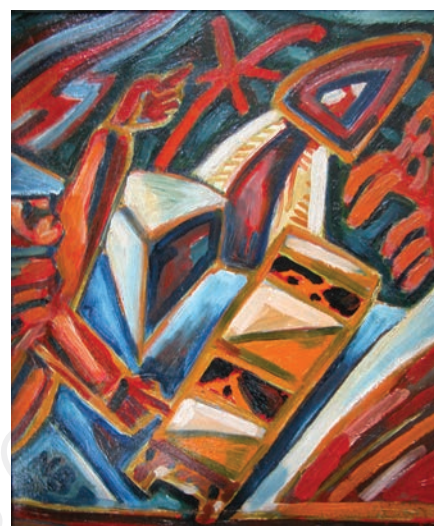
Oil on Linen, Signed, 78 x 136cm, \$15000 - 18000



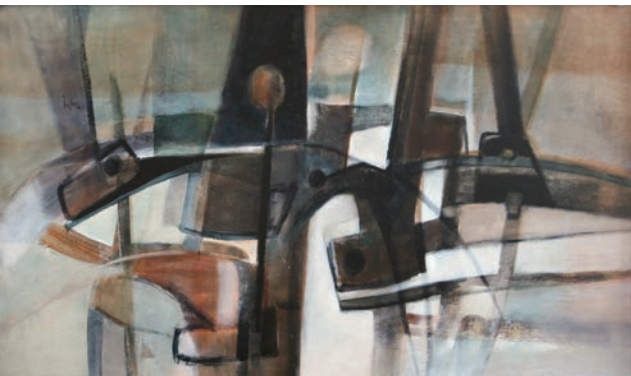
32

Nigel Brown, b.1949*Clothesline Painting No 4*, 1981

Acrylic on board, Signed, 40 x 58cm, \$4500 - 5500



33

Nigel Brown, b.1949*Two Journeys, version A*, 1980Oil on board, Signed, 38 x 29cm
\$3000 - 4000

34

Arthur Dagley

1919-1998

Waterfront Theme, c.1970

Acrylic on board

Signed

72 x 120cm

\$1700 - 2000

**35****Grant Corbishley**

b.1951

N.1284.S.3-D.08, 2008

Colour Pencil on wood

Signed

30 x 34cm

\$1200 - 1400

**36****Michael Smither**

b.1939

Yellow Boat, 1998

Screen Print

Numbered 7/20

41 x 34cm

\$1100 - 1400

**37****Tom Mutch**

b.1951

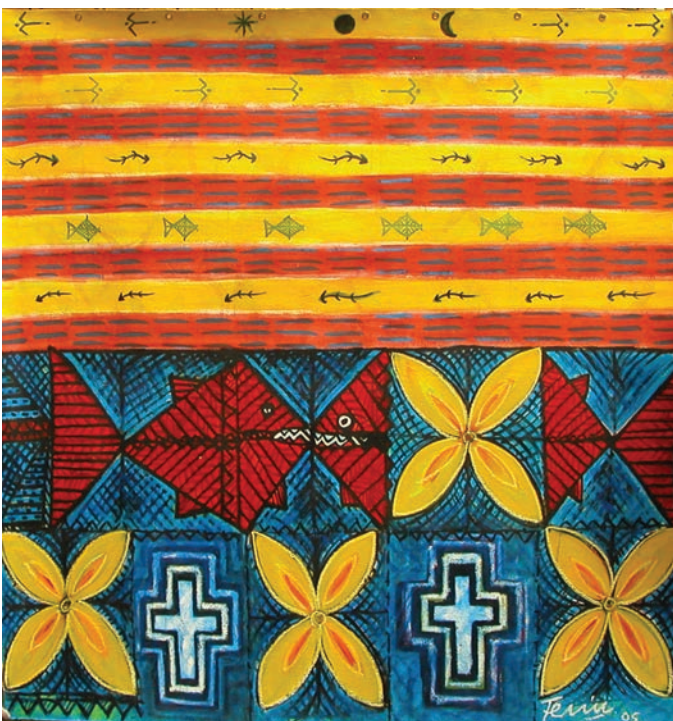
Superbird and Powerflower, 2005

Screen Print

Numbered 9/70

80 x 66cm

\$1200 - 1500

**38****Fatu Feu'u**

b.1946

*Alakifa Moana, 2005*Mixed Media
on canvas

Signed

153 x 148cm

\$7500 - 9500

**39****Keith Patterson**

1925-1993

Koru Landscape, 1989

Mixed Media

Signed & dated

64 x 50cm

\$2000 - 2500



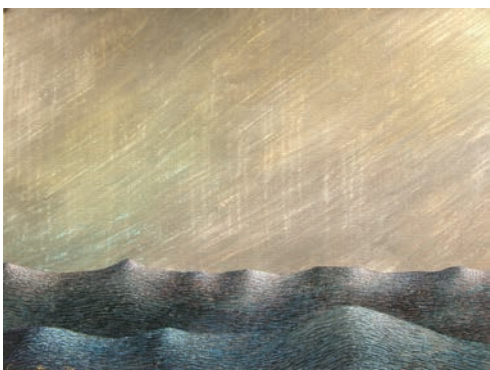
40
Philippa Blair
b.1945
Cut Loose, 2006
Oil on canvas
Signed verso
92 x 92cm
\$4000 - 6000



41
Philippa Blair
b.1945
Vista, 2002
Oil on canvas
Signed verso
61 x 46cm
\$1800 - 2200



42
Justin Summerton
b.1968
Piha, 2007
Oil on canvas
Signed
60 x 50cm
\$4000 - 5000



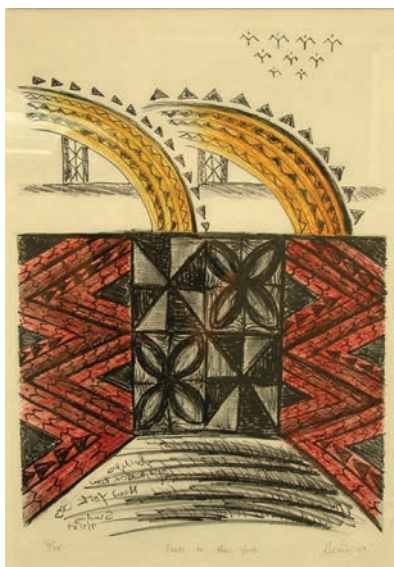
43
Justin Summerton
b.1968
Otago Hills, 2005
Oil on paper
Signed
60 x 45cm
\$3000 - 4000



44
Barry Lett, b.1940
Father & Children, 1996
Wood sculpture, Signed, 140 x 66 x 27cm
\$3500 - 5000



45
Rozi Demant, b.1984
Girl with Cages, 2005
Acrylic on board, Signed, 118 x 58cm
\$10000 - 12000



46
Fatu Feu'u
 b.1946
Roads to New York, 1989
 Lithograph 16/25
 Signed
 53 x 37 cm
 \$1000 - 1200



47
Fatu Feu'u
 b.1946
Manhattan Subway, 1989
 Lithograph 15/25
 Signed
 53 x 37 cm
 \$1000 - 1200



48
Philip Trusttum
 b.1940
Thistle Tim, 1990
 Mixed media
 on canvas
 Signed & dated
 200 X 84cm
 \$5000 - 6000



49
Nigel Brown
 b.1949
Bitter Fruit
 Lithograph 5/10
 Signed
 36 x 23cm
 \$900 - 1200



50
Philip Trusttum
 b.1940
Chinese Mask series, 1997
 Acrylic on Fabriano paper
 Signed
 16 x 20 cm
 \$1000 - 1250



51
Colin McCahon
 1919-1987
Nelson Landscape,
 1942
 Watercolour
 Signed & dated
 15 x 17cm
 \$22000 - 25000

Provenance: ex-private collection Auckland. Originally purchased from the estate of Patrick Hayman, a close friend of Colin McCahon.

This painting is one of a series of early paintings of the Nelson Hills and Otago landscape, the genesis of which can be found in the book "Geomorphology of New Zealand" by Prof C.A. Cotton. This book was gifted as a wedding present to the McCahon's by

Patrick Hayman in 1942. One of McCahon's first exhibitions was arranged by Patrick Hayman at The French Maid Cafe in Wellington around 1942. It is not known if this painting was included in this actual exhibition, however it was gifted to Patrick Hayman by the artist most certainly during this time. Several of McCahon's most ground breaking landscapes were painted later in the 1940's, such as the major work "Takaka Night and Day" 1948

(ACAG), "Nelson Hills" 1947 and "The Caterpillar Landscape" 1917.

"The effect of Cotton's explicit drawings on McCahon's interpretation of the New Zealand landscape was gradual but finally decisive, reaching its initial zenith in the landscapes of 1947 and 1948"*

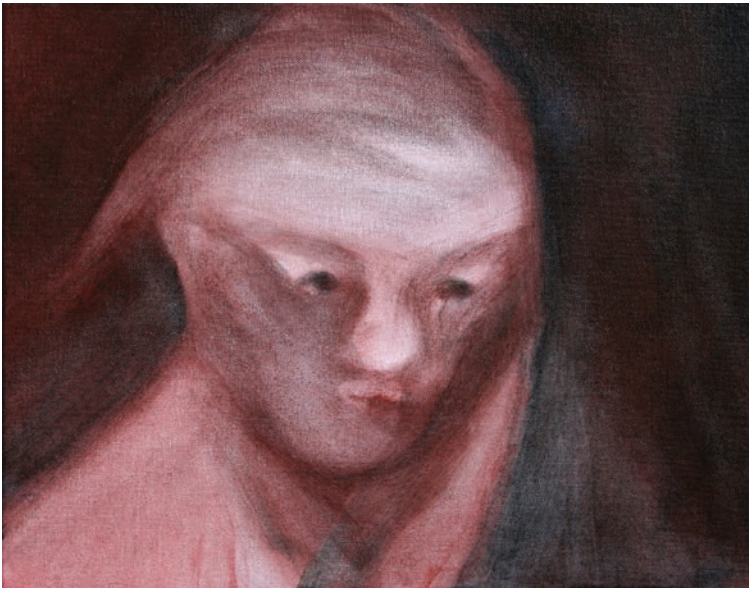
**Colin McCahon - Artist*
 by Gordon H Brown - Reed Pub 1984 p 22



52
Toss Woollaston
 1910-1998
Landscape with Sun, c.1955
 Watercolour
 Signed
 30 x 38cm
 \$4000 - 6000



53
Simon Kaan
 b.1971
Seascape (Worker's Bed Series), 2004/05
 Oil on Board
 Signed, 92 x 92cm
 \$15000 - 17500



54

Tony Fomison

1939-1990

King Lear's eldest daughter, 1987

Oil on canvas board

Signed verso, 35 x 44cm

\$32000 - 35000



55

Philip Clairmont

1948-1984

The Wardrobe, 1977

Watercolour, Signed, 40 x 28cm

\$10500 - 12000



56

Trevor Moffitt

1936-2006

Felled by a Stroke, 1980

Oil on board, Signed & dated, 54 x 65cm

\$12000 - 14000



57

Garth Tapper

1927-1999

Friday for Hock

Oil on board

Signed

31 x 25cm

\$2200 - 2800



58

Patricia France

1911-1995

A Difference of Opinion, 1986

Gouache, Signed, 40 x 45cm

\$4000 - 6000



59
Rata
Lovell-Smith
1894-1969
Nelson Farm Scene, c.1930
Oil on canvas board
Signed
41 x 51cm
\$7500 - 9500



60
James Nairn
1859-1904
Harbour Scene, 1890
Watercolour
Signed & dated, 23 x 31cm
\$3000 - 5000

61
D.K. Richmond
1861-1935
Spring Flowers
Watercolour
Signed, 51 x 38cm
\$5000 - 8000



62
Horace Moore-Jones
1868-1922
Sydney Harbour, c.1900
Oil on canvas, Signed, 24 x 44cm
\$4500 - 6000



**63****J.C. Hoyte**

1835-1913

A Steamer Entering the Sounds

Watercolour

Signed

23 x 44cm

\$5000 - 7000

**64****L.W. Wilson**

1850-1912

Mitre Peak, Milford Sound, 1889

Oil on canvas,

Signed, titled &

dated, 73 x 91cm

\$12000 - 16000

65**H.W. Kirkwood**

1854-1925

Alpine Sunset

Oil on board

Initialed

28 x 43cm

\$3000 - 4000

**66****L.W. Wilson**

1850-1912

Preservation Inlet, 1889

Oil on canvas, Signed, titled & dated, 40 x 76cm

\$9000 - 12000



67

John Gully

1819-1888

Golden Bay and the Tasman Mountains, 1887

Watercolour

Signed & dated 1887

34 x 51cm

\$28000 - 35000



68

Charles Blomfield

1848-1926

Pink Terraces, 1903

Oil on canvas

Signed & dated

40 x 50cm

\$15000 - 20000



69

Charles Blomfield

1848-1926

Waikato River, 1889

Oil on board

Signed & dated

21 x 29cm

\$3000 - 4000



70
Vera Cummings
 1891-1949
Maori Woman with Moko
 Oil on canvas
 Signed
 20 x 15cm
 \$4000 - 6000



71
Carl Laugeson
 1900-1987
Ngawiri Watakina, 1939
 Oil on board
 Signed & dated
 36 x 26cm
 \$800 - 1200



72
W Allen Bollard
 1869-1941
Maori Camp Waikato River, 1914
 Oil on board
 Signed, titled & dated
 28 x 48cm
 \$2000 - 2500



73
Ilene Stichbury
 1898-1991
Pah Scene
 Oil on canvas
 Signed
 30 x 50cm
 \$1400 - 1800



74
Ilene Stichbury
 1898-1991
River Scene
 Oil on canvas
 Signed
 30 x 50cm
 \$1400 - 1800

75
John Douglas Perrett
 1859-1937
Ohinemutu
 Oil on board
 Signed, 17 x 27cm
 \$600 - 900



**76****W.G. Baker**

1864-1929

Mt Ruapehu

Oil on canvas

Signed & titled

74 x 110cm

\$7000 - 10000

77**Petrus van der Velden**

1837-1913

The Card Players

Oil on canvas

69 x 93cm

\$40000 - 50000





78
R. Roberti
 Italian 20thC
Venetian Canal
 Oil on canvas
 Signed
 70 x 50cm
 \$3000 - 5000



79
Salvaggio
 Italian 20thC
Île de la Cité, Paris
 Oil on canvas
 Signed
 48 x 59cm
 \$2800 - 4500



80
C.N. Worsley
 1862-1923
Seascape
 Watercolour
 Signed
 33 x 48cm
 \$800 - 1200



81
Eric Lee-Johnson
 1908-1994
*Sawmill at Aratapu,
 Northern Wairoa, 1960*
 Ink on paper
 Signed & dated
 26 x 35cm
 \$600 - 900



82
Frank Brookesmith
 1860-1932
Lake Te Anau, 1920
 Oil on board
 Signed & dated
 35 x 53cm
 \$900 - 1200

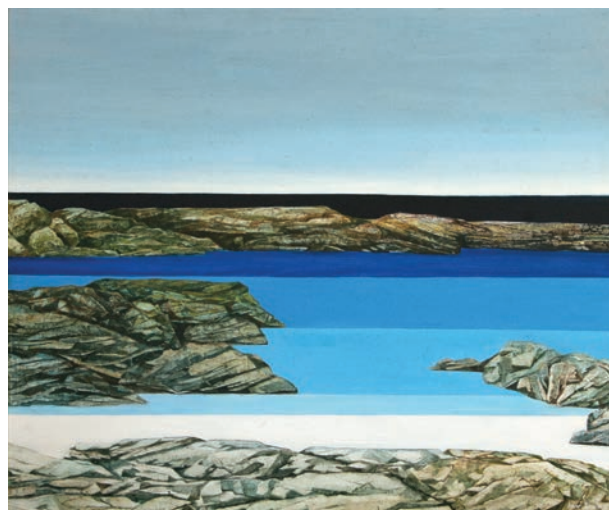


83
Michael Sass
 NZ 20thC
Arthurs Pass Tarn, 2004
 Pastel
 Signed
 66 x 72cm
 \$2000 - 3000

84
Irene Denford
 NZ 20thC
Seascape, 1980
 Acrylic on board
 Signed
 80 x 96cm
 \$1200 - 1600



86
Dean Buchanan
 b.1952
New Zealand Bush Scene
 Oil on Hessian
 Signed verso
 280 x 160cm
 4800 - 6000



85
Dean Buchannan
 b.1952
Karekare Beach Road, 2003
 Oil on canvas
 Signed verso
 55 x 154cm
 \$3000 - 4000





87
Carol Shephard
 b.1945
Shaft of Fire, 1985
 Mixed media
 Signed
 153 x 117cm
 \$1750 - 2000

Exhibited at *In Detail*,
 Hawkes Bay Museum, 1997.

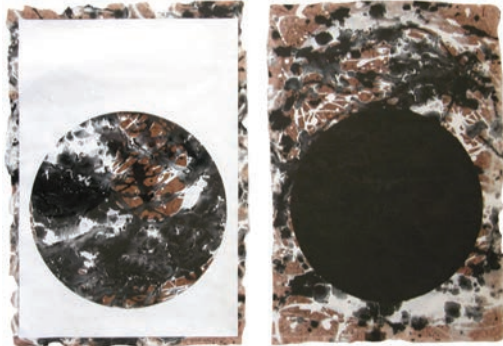
Thence *Touring Exhibition 1998*.

Letter from Hawkes Bay Museum
 on reverse.

Ex *The Jenkins Collection*, Auckland.



88
Robyn Kahukiwa
 b.1940
Dark Hina, 2007
 Alkyd oil & oil on canvas
 Signed
 80 x 65cm
 \$5500 - 6500



89
Nick Wall
 NZ 20thC
*There Is No Such
 Thing as a One Sided
 Mountain 2005*
 Mixed media
 Signed
 44 x 30cm (x2)
 \$1450 - 1650



90
Bill Hammond
 b.1947
Limbo Bay 1
 Litho 11/45
 Signed
 52 x 74cm
 \$2500 - 3500



91
Kate Jones-Madill
 NZ 20thC
Peacocks
 Watercolour
 Signed
 59 x 42cm
 \$600 - 900

92
April Shin
 b.1976
Autumns
 Mixed media
 Signed
 100 x 80 cm
 \$4000 - 5500





93
Gary Tricker
b.1938
Aspiration, 1983
Aquatint etching 46/50
Signed
29 x 25cm
\$150 - 250

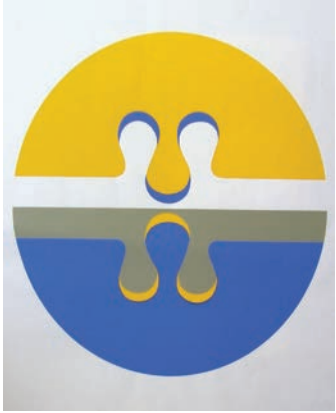
94
Box of assorted art books
Including *Investing in Old New Zealand Paintings, Modern Painting from Impressionism to Abstract Art, Materials & Techniques of Oil Painting*
\$40 - 80



95
W.M. Freeman
NZ 20thC
Fecundity III
Lithograph 5/50
Signed
26 x 36cm
\$150 - 250



96
W.M. Freeman
NZ 20thC
Fecundity IV
Lithograph 11/30
Signed
24 x 34cm
\$200 - 300



97
Ross Ritchie
b.1941
Three 1968
Screen Print
Signed
43cm dia
\$600 - 900



98
Phillip Clairmont
1949-1984
Black Crucifixion
Screenprint 53/90
Signed & dated '81
81 x 54cm
\$4000 - 5000





99
Josephine Davis
 b.1959
Summer Roses
 Watercolour
 Signed, 36 x 47cm
 \$700 - 1000



100
J. Ranken
Flowers
 Oil on board
 Signed, 41 x 31cm
 \$400 - 700



101
Terry Stringer
 b.1946
Reclining Nude, 1980
 Watercolour
 Signed
 35 x 50cm
 \$1600 - 1900



104
John Boyd
 NZ 20thC
Caroline, 1996
 Pastel
 Signed
 48 x 30cm
 \$500 - 800



102
Josephine Davis
 b.1959
Seated Nude
 Oil on canvas
 Signed
 40 x 30cm
 \$800 - 1200

103
M Uella?
 NZ 20thC
Still Waters, Haast
 Oil on canvas
 Signed
 31 x 41cm
 \$250 - 400





FINE ART SOCIETY
NEW ZEALAND LIMITED

ABSENTEE BIDDING FORM

HAND IN AT AESTHETE GALLERY, HAMILTON, OR FAX TO: 07 839 0731

Name:.....
 Address:.....

 Phone:..... Mobile:.....
 Fax:..... Email:.....

Bidding Number
(Will be issued for our reference)

Please bid on my behalf at the *Waikato Art Auction 2008* sale for the lots listed below.
These bids are to be executed as cheaply as permitted by other bids or reserves.
I agree to comply with the Conditions of Sale as printed in this catalogue.

Signed:.....

Lot No.	Artist/Description	\$ Bid Price (excluding Premium)
.....
.....
.....
.....
.....
.....
.....
.....
.....
.....
.....

VIEWING AND SALE HELD AT

Aesthete Gallery
 cnr Victoria & London Streets
 Hamilton
 Ph: 07 839 0730
 Fax: 07 839 0731
 www.aesthete.co.nz
 elizabeth@aesthete.co.nz

AUCTIONEER

Warwick Henderson
 Licensed auctioneer

WARWICK HENDERSON GALLERY
 www.warwickhenderson.co.nz
 32 Bath Street, Parnell. 09 309 7513



FINE ART SOCIETY
NEW ZEALAND LIMITED

CONDITIONS OF SALE

The highest bidder shall be the buyer. In the event of any dispute as to the bidding in respect of any lot, that lot be offered again at the discretion of the auctioneer whose decision shall be absolute and final.

The auctioneer has the right:

1. To refuse any bid
2. To advance the bidding at his absolute discretion
3. To place a reserve on any lot
4. To place a bid or bids on behalf of the seller
5. To withdraw any lot from sale
6. To require a successful bidder to pay forthwith the whole or any parts of the purchase price

The auctioneer acts as the agent of the seller and the auctioneer nor the seller shall be responsible for any defects or faults in any lot or for any errors in the description of any lot and no compensation shall be paid in respect of same.

From the time of the lot being sold, such lot will be the responsibility of the buyer.

BUYERS' GUIDE

BIDDER REGISTRATION

All intending bidders are required to register for a bidding number prior to the auction commencing.

ABSENTEE BIDS

Absentee bidding can be arranged – please ask a member of staff for an *Absentee Bidding Form* or see overleaf. The Auctioneers will do its utmost to execute absentee bids for customers, however it will not be responsible if circumstances arise which result in failure to do so.

COLLECTION OR DELIVERY OF PURCHASES

Successful bidders may collect their purchases after making payment at the conclusion of the auction. Purchasers are required to settle their accounts and collect their purchases within 24 hours after the sale. Packing and freight can be arranged at the buyer's expense.

BUYERS' PREMIUM

A buyers' premium of 12.5% (plus GST) applies to all lots.

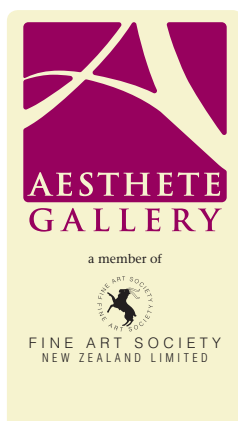
ESTIMATES

Estimates are provided as a guide only. They are prepared well in advance of the sale and are subject to revision at any time.

PAYMENT FACILITIES

EFTPOS is available for transactions up to \$2,000 which is the bank's daily limit. For transactions over that amount it is possible to pay by cheque where credit card details are provided as security and at the sole discretion of management. Credit cards are accepted on the understanding that a 2% surcharge applies.

VIEWING AND SALE HELD AT



Aesthete Gallery
cnr Victoria & London Streets
Hamilton
Ph: 07 839 0730
Fax: 07 839 0731
www.aesthete.co.nz
elizabeth@aesthete.co.nz

AUCTIONEER

Warwick Henderson
Licensed auctioneer



WARWICK HENDERSON GALLERY
www.warwickhenderson.co.nz



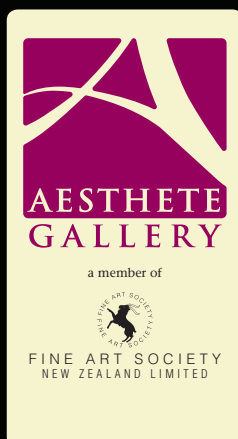
Lot 68

WAIKATO ART AUCTION 2008



Proudly supported by The Rotary Club of Waikato Sunrise

Waikato Art Auction 2008 will assist in raising funds for the Hydro-Therapy Trust



TO BE HELD AT:
Aesthete Gallery
cnr Victoria & London Streets
Hamilton
Ph: 07 839 0730
Fax: 07839 0731
www.aesthete.co.nz
elizabeth@aesthete.co.nz

Auction being conducted by:
Warwick Henderson
Licensed auctioneer



WARWICK HENDERSON GALLERY
www.warwickhenderson.co.nz
32 Bath Street, Parnell. 09 309 7513